



# KINGSTON

An impressive new home design offering five bedrooms, three-and-a-half bathrooms, and a double garage.

On the ground floor, you'll discover a guest bedroom complete with an ensuite, providing a private haven for visitors. Additionally, there's a convenient powder room for guests' use, along with a modern kitchen, spacious lounge/media room, and a dining area that seamlessly extends to the alfresco space.

Upstairs, the luxurious master suite awaits, featuring a walk-in robe and ensuite for added comfort and convenience. Three additional bedrooms offer ample accommodation options, while a main bathroom ensures practicality for the whole family. Plus, there's a retreat area, providing a versatile space for relaxation or entertainment.

## STANDARD INCLUSIONS

- ✓ Westinghouse WFE915SD Freestanding Cooker
- ✓ Westinghouse WRI700SB 71cm Rangehood
- ✓ Westinghouse WSF6604XA Dishwasher
- ✓ 20mm Solid Surface Benchtop to kitchen and bathrooms
- ✓ Downlights as per detailed drawings
- ✓ Daikin ducted A/C (kW determined based on design)
- ✓ 2590mm high ceilings (2440 to first floor of double storey designs)
- ✓ Tiles to main living areas and carpet to bedrooms
- ✓ Driveway
- ✓ Integrated concrete slab and tiles to portico and alfresco

20 Cato Circuit, Leppington NSW 2179

[www.infinitehomes.com.au](http://www.infinitehomes.com.au)

P 02 4703 4040 M 0406 248 064

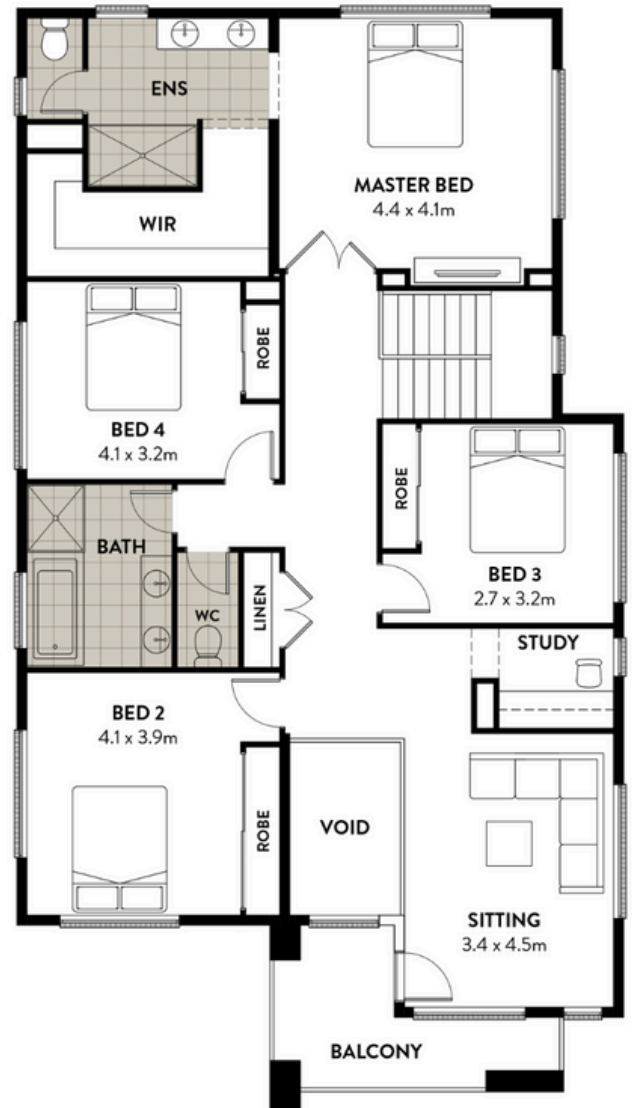
E [sales@infinitehomes.com.au](mailto:sales@infinitehomes.com.au)

 **INFINITE  
HOMES**  
BUILT TO LAST

# KINGSTON

## HOME DIMENSIONS

Home Width	11.5m
Home Length	21.7m
Ground Floor	142.91m <sup>2</sup>
First Floor	145.80m <sup>2</sup>
Garage	35.37m <sup>2</sup>
Alfresco	16.42m <sup>2</sup>
Portico	6.66m <sup>2</sup>
<b>TOTAL AREA</b>	<b>356.1m<sup>2</sup></b>



20 Cato Circuit, Leppington NSW 2179

[www.infinitehomes.com.au](http://www.infinitehomes.com.au)

P 02 4703 4040 M 0406 248 064

E [sales@infinitehomes.com.au](mailto:sales@infinitehomes.com.au)

**INFINITE  
HOMES**  
BUILT TO LAST