



CALI

Welcome to a single-storey haven perfectly designed for contemporary living on narrow lots.

This four-bedroom, two-bathroom residence with a single-car garage is tailor-made for astute families seeking both functionality and comfort.

The Cali offers an inviting open-plan living space ideal for family gatherings and entertaining. Additionally, it features a secluded retreat area, providing a private sanctuary for relaxation and unwinding after a busy day.

STANDARD INCLUSIONS

- ✓ Westinghouse WFE915SD Freestanding Cooker
- ✓ Westinghouse WRI700SB 71cm Rangehood
- ✓ Westinghouse WSF6604XA Dishwasher
- ✓ 20mm Solid Surface Benchtop to kitchen and bathrooms
- ✓ Downlights as per detailed drawings
- ✓ Daikin ducted A/C (kW determined based on design)
- ✓ 2590mm high ceilings (2440 to first floor of double storey designs)
- ✓ Tiles to main living areas and carpet to bedrooms
- ✓ Driveway
- ✓ Integrated concrete slab and tiles to portico and alfresco

20 Cato Circuit, Leppington NSW 2179

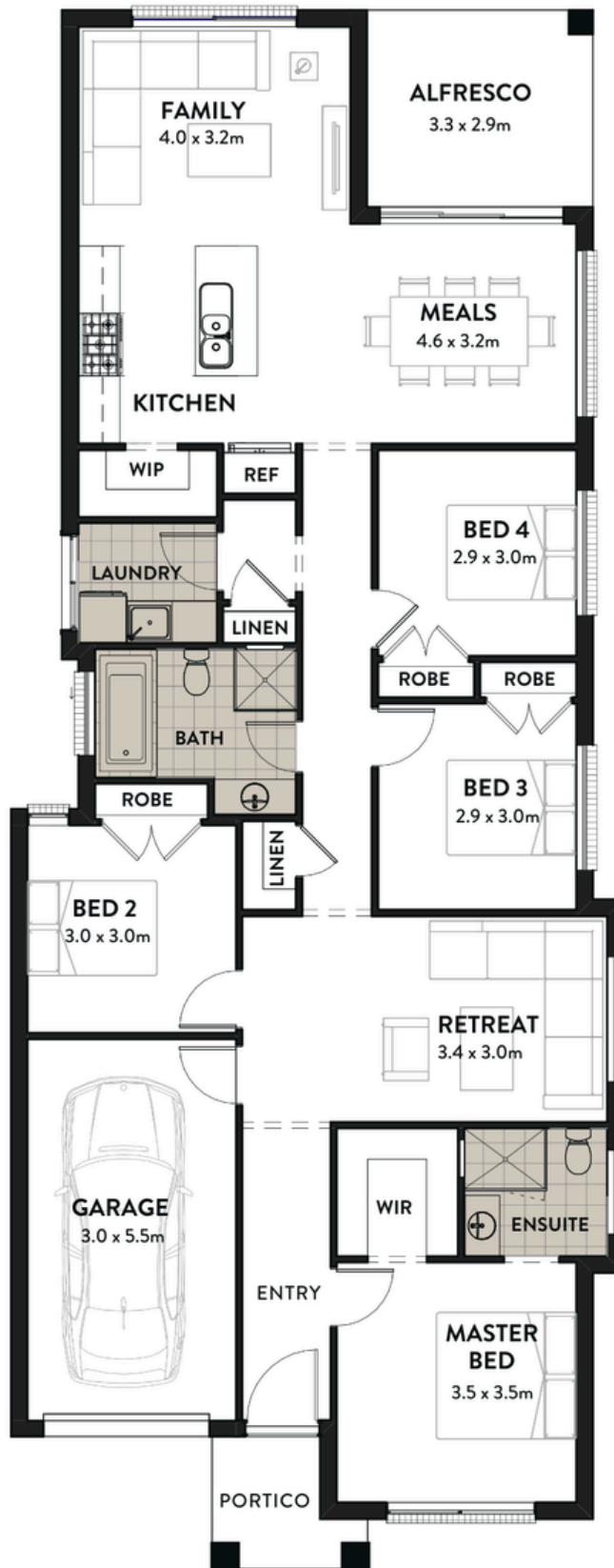
www.infinitehomes.com.au

P 02 4703 4040 M 0406 248 064

E sales@infinitehomes.com.au

 **INFINITE
HOMES**
BUILT TO LAST

CALI



HOME DIMENSIONS	
Home Width	8.9m
Home Length	22.5m
Living	144.25m ²
Garage	18.80m ²
Alfresco	9.35m ²
Portico	3.50m ²
TOTAL AREA	175.90m²

20 Cato Circuit, Leppington NSW 2179

www.infinitehomes.com.au

P 02 4703 4040 M 0406 248 064

E sales@infinitehomes.com.au

INFINITE HOMES
BUILT TO LAST