



RIO

Step into a world of comfort and style where functionality meets efficiency.

Perfectly crafted for modern living on narrow lots, this compact single-storey home offers three bedrooms, two bathrooms and a single-car garage. The Rio boasts a clever layout that maximises space and efficiency. As you enter, you'll find the master suite, thoughtfully positioned at the front for privacy and tranquillity and the single-car garage, providing convenient internal access and storage solutions.

The highlight of the Rio however, is its expansive open-plan kitchen, living, and dining area. Designed for seamless entertaining, this light-filled space flows effortlessly onto a generous alfresco area, creating the perfect setting for outdoor dining, relaxation, and social gatherings

STANDARD INCLUSIONS

- ✓ Westinghouse WFE915SD Freestanding Cooker
- ✓ Westinghouse WRI700SB 71cm Rangehood
- ✓ Westinghouse WSF6604XA Dishwasher
- ✓ 20mm Solid Surface Benchtop to kitchen and bathrooms
- ✓ Downlights as per detailed drawings
- ✓ Daikin ducted A/C (kW determined based on design)
- ✓ 2590mm high ceilings (2440 to first floor of double storey designs)
- ✓ Tiles to main living areas and carpet to bedrooms
- ✓ Driveway
- ✓ Integrated concrete slab and tiles to portico and alfresco

20 Cato Circuit, Leppington NSW 2179

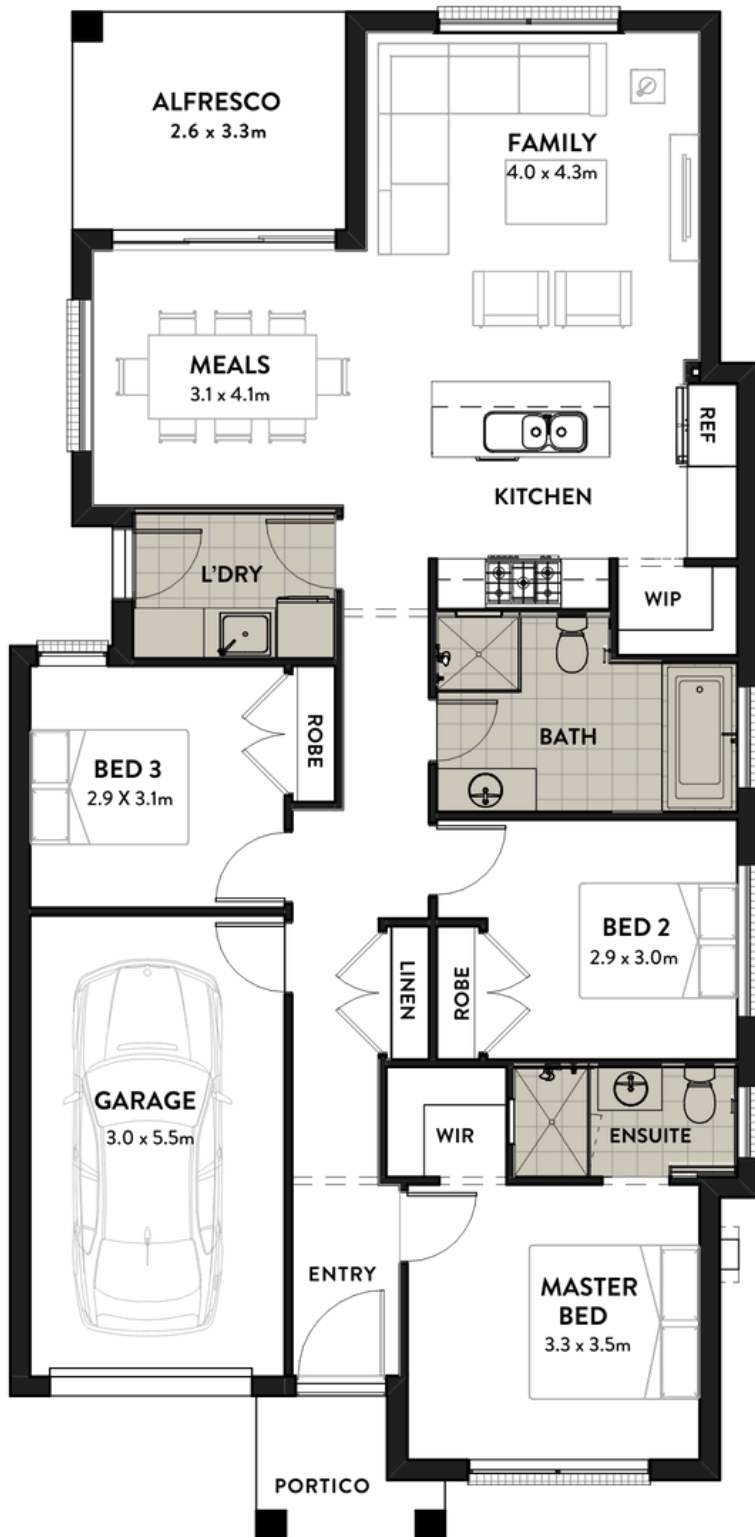
www.infinitehomes.com.au

P 02 4703 4040 M 0406 248 064

E sales@infinitehomes.com.au

 **INFINITE
HOMES**
BUILT TO LAST

RIO



HOME DIMENSIONS	
Home Width	8.9m
Home Length	18.2m
Living	113.55m ²
Garage	19.56m ²
Alfresco	8.48m ²
Portico	3.18m ²
TOTAL AREA	144.76m²

20 Cato Circuit, Leppington NSW 2179

www.infinitehomes.com.au

P 02 4703 4040 M 0406 248 064

E sales@infinitehomes.com.au