

4



2.5



1



10m



23.7sq

SYDNEY

A stunning double-storey home design boasting four bedrooms, 2.5 bathrooms and a single-car garage.

On the ground floor, you'll find a spacious media room, perfect for entertaining or relaxing movie nights. The meals and family areas flow seamlessly together, creating a welcoming space for everyday living. Step outside to the alfresco area, ideal for outdoor dining and enjoying the fresh air.

Upstairs, the master suite awaits, complete with a walk-in-robe and ensuite. Three additional bedrooms and a main bathroom provide plenty of space for the whole family.

STANDARD INCLUSIONS

- ✓ Westinghouse WFE915SD Freestanding Cooker
- ✓ Westinghouse WRI700SB 71cm Rangehood
- ✓ Westinghouse WSF6604XA Dishwasher
- ✓ 20mm Solid Surface Benchtop to kitchen and bathrooms
- ✓ Downlights as per detailed drawings
- ✓ Daikin ducted A/C (kW determined based on design)
- ✓ 2590mm high ceilings (2440 to first floor of double storey designs)
- ✓ Tiles to main living areas and carpet to bedrooms
- ✓ Driveway
- ✓ Integrated concrete slab and tiles to portico and alfresco

20 Cato Circuit, Leppington NSW 2179

www.infinitehomes.com.au

P 02 4703 4040 M 0406 248 064

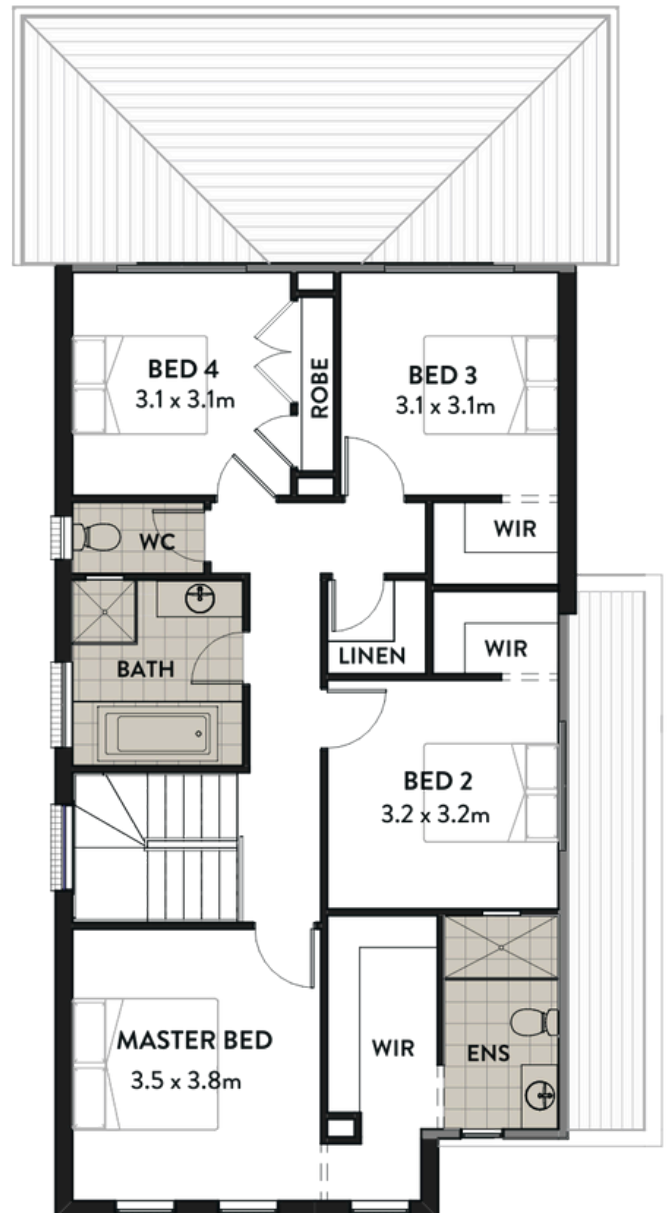
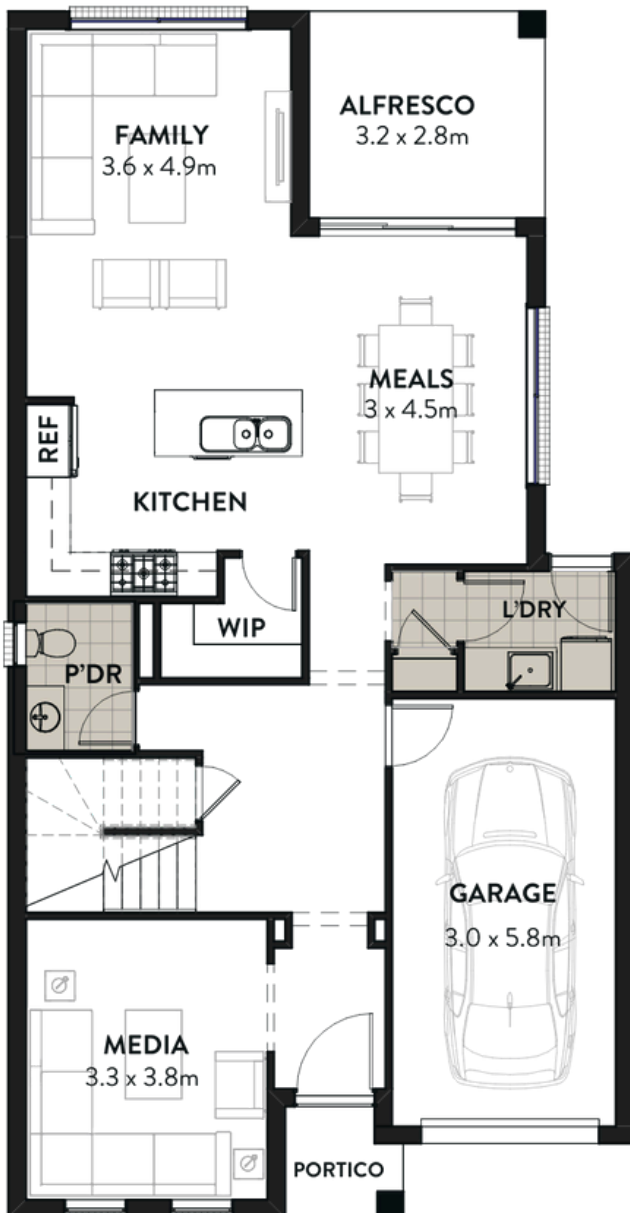
E sales@infinitehomes.com.au

 **INFINITE
HOMES**
BUILT TO LAST

SYDNEY

HOME DIMENSIONS

Home Width	8.4m
Home Length	16.3m
Ground Floor	95.46m ²
First Floor	94.12m ²
Garage	19.84m ²
Alfresco	8.96m ²
Portico	2.21m ²
TOTAL AREA	220.58m²



20 Cato Circuit, Leppington NSW 2179

www.infinitehomes.com.au

P 02 4703 4040 M 0406 248 064

E sales@infinitehomes.com.au

**INFINITE
HOMES**
BUILT TO LAST