



LISBON

A single-storey home design ideal for growing families, offering four bedrooms, two bathrooms and a double garage.

Discover the spacious front master suite, featuring a generous walk-in robe and ensuite, providing a peaceful sanctuary. Three additional bedrooms, each equipped with built-in robes, offer ample storage space for all your family's needs. The spacious main bathroom caters to everyday needs with ease.

The rear of the home is designed for entertaining, with open-plan living and dining area that seamlessly integrate with the alfresco space. Enjoy gatherings with family and friends in this inviting and versatile layout.

STANDARD INCLUSIONS

- ✓ Westinghouse WFE915SD Freestanding Cooker
- ✓ Westinghouse WRI700SB 71cm Rangehood
- ✓ Westinghouse WSF6604XA Dishwasher
- ✓ 20mm Solid Surface Benchtop to kitchen and bathrooms
- ✓ Downlights as per detailed drawings
- ✓ Daikin ducted A/C (kW determined based on design)
- ✓ 2590mm high ceilings (2440 to first floor of double storey designs)
- ✓ Tiles to main living areas and carpet to bedrooms
- ✓ Driveway
- ✓ Integrated concrete slab and tiles to portico and alfresco

20 Cato Circuit, Leppington NSW 2179

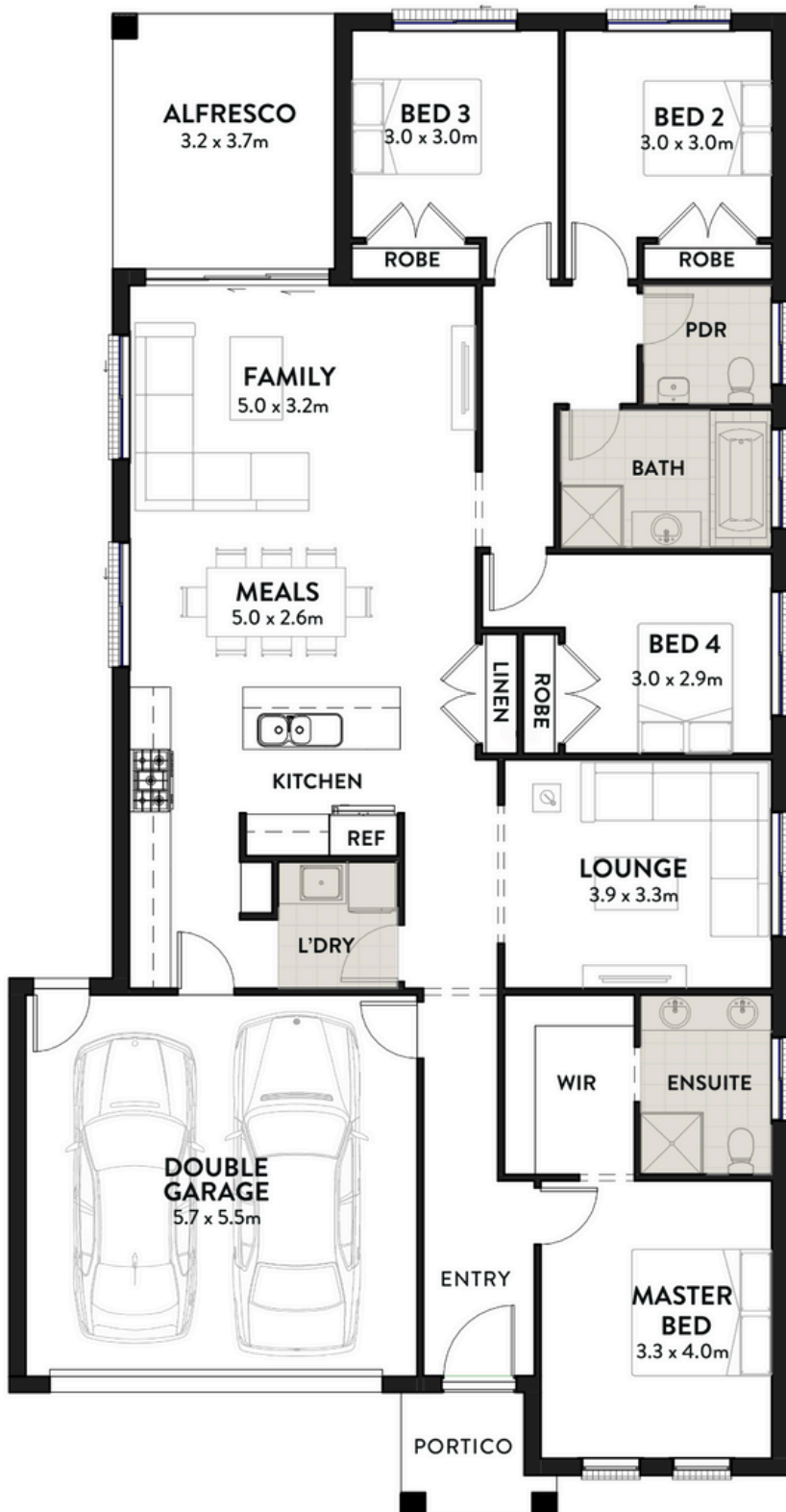
www.infinitehomes.com.au

P 02 4703 4040 M 0406 248 064

E sales@infinitehomes.com.au

 **INFINITE
HOMES**
BUILT TO LAST

LISBON



HOME DIMENSIONS	
Home Width	11.2m
Home Length	21.7m
Living	162.57m ²
Garage	34.34m ²
Alfresco	11.88m ²
Portico	3.49m ²
TOTAL AREA	212.28m²

20 Cato Circuit, Leppington NSW 2179

www.infinitehomes.com.au

P 02 4703 4040 M 0406 248 064

E sales@infinitehomes.com.au

**INFINITE
HOMES**
BUILT TO LAST