



DENVER

A spacious family home design featuring four bedrooms, two bathrooms and a double garage.

On the ground floor, you'll find a spacious media room, or guest bedroom with bathroom parallel. At the heart of the home sits a modern kitchen with large island bench, open-plan living and dining areas that seamlessly connect to the alfresco.

Upstairs, the luxurious master suite awaits, complete with a walk-in robe and ensuite. Three additional bedrooms provide ample accommodation, while a main bathroom ensures convenience. Plus, there's a retreat area, offering a versatile space for relaxation or entertainment.

STANDARD INCLUSIONS

- ✓ Westinghouse WFE915SD Freestanding Cooker
- ✓ Westinghouse WRI700SB 71cm Rangehood
- ✓ Westinghouse WSF6604XA Dishwasher
- ✓ 20mm Solid Surface Benchtop to kitchen and bathrooms
- ✓ Downlights as per detailed drawings
- ✓ Daikin ducted A/C (kW determined based on design)
- ✓ 2590mm high ceilings (2440 to first floor of double storey designs)
- ✓ Tiles to main living areas and carpet to bedrooms
- ✓ Driveway
- ✓ Integrated concrete slab and tiles to portico and alfresco

20 Cato Circuit, Leppington NSW 2179

www.infinitehomes.com.au

P 02 4703 4040 M 0406 248 064

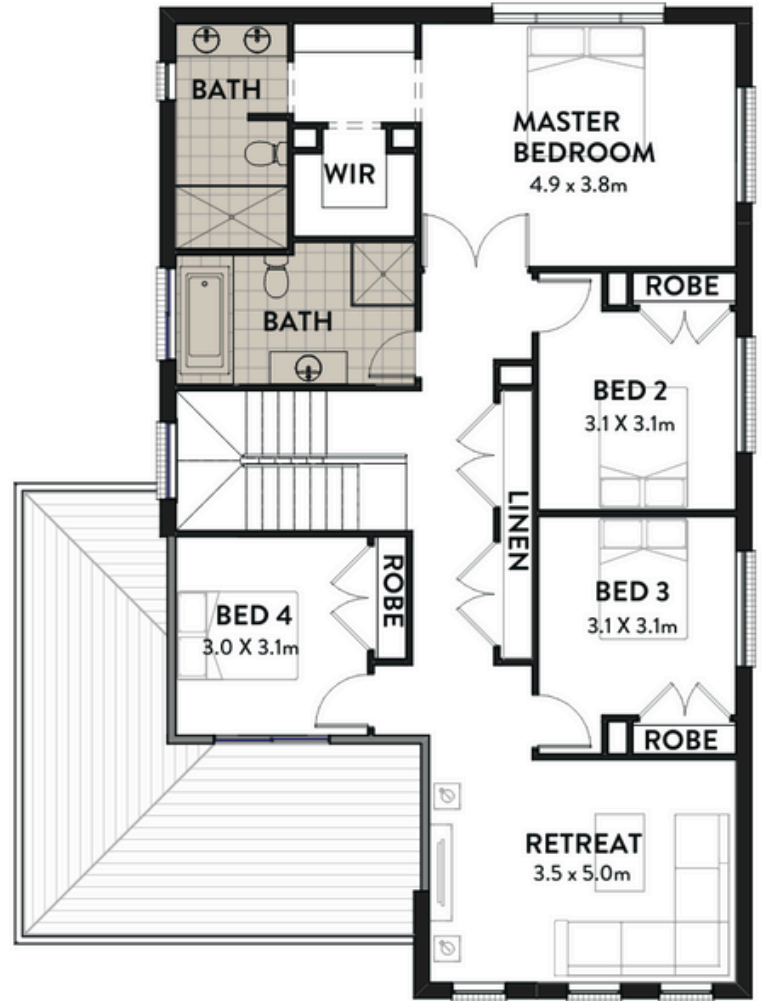
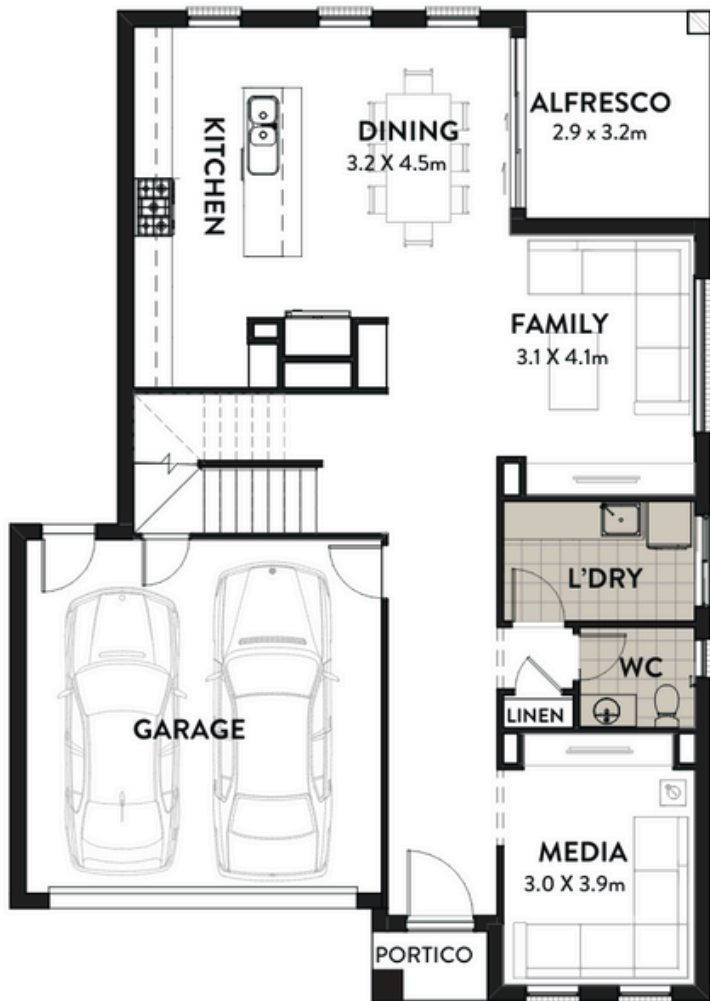
E sales@infinitehomes.com.au

 **INFINITE
HOMES**
BUILT TO LAST

DENVER

HOME DIMENSIONS

Home Width	10.9m
Home Length	15.6m
Ground Floor	101.95m ²
First Floor	126.53m ²
Garage	33.72m ²
Alfresco	9.33m ²
Portico	1.94m ²
TOTAL AREA	273.51m²



20 Cato Circuit, Leppington NSW 2179

www.infinitehomes.com.au

P 02 4703 4040 M 0406 248 064

E sales@infinitehomes.com.au

**INFINITE
HOMES**
BUILT TO LAST