



MARBELLA

This single storey home boasts an expansive alfresco and open plan living area that make it the ultimate entertainer.

The Marbella offers everything the modern family could desire. With four spacious bedrooms, the master includes ensuite and walk-in-robe and sits opposite a dedicated media room.

The rear of the home is all about entertaining with full width alfresco area and open plan kitchen, living and dining. This home is ideal for families that love to share a meal, a laugh and create memories together. With excellent separation between bedrooms and living zones, this home will suit families of all ages and sizes.

STANDARD INCLUSIONS

- ✓ Westinghouse WFE915SD Freestanding Cooker
- ✓ Westinghouse WRI700SB 71cm Rangehood
- ✓ Westinghouse WSF6604XA Dishwasher
- ✓ 20mm Solid Surface Benchtop to kitchen and bathrooms
- ✓ Downlights as per detailed drawings
- ✓ Daikin ducted A/C (kW determined based on design)
- ✓ 2590mm high ceilings (2440 to first floor of double storey designs)
- ✓ Tiles to main living areas and carpet to bedrooms
- ✓ Driveway
- ✓ Integrated concrete slab and tiles to portico and alfresco

20 Cato Circuit, Leppington NSW 2179

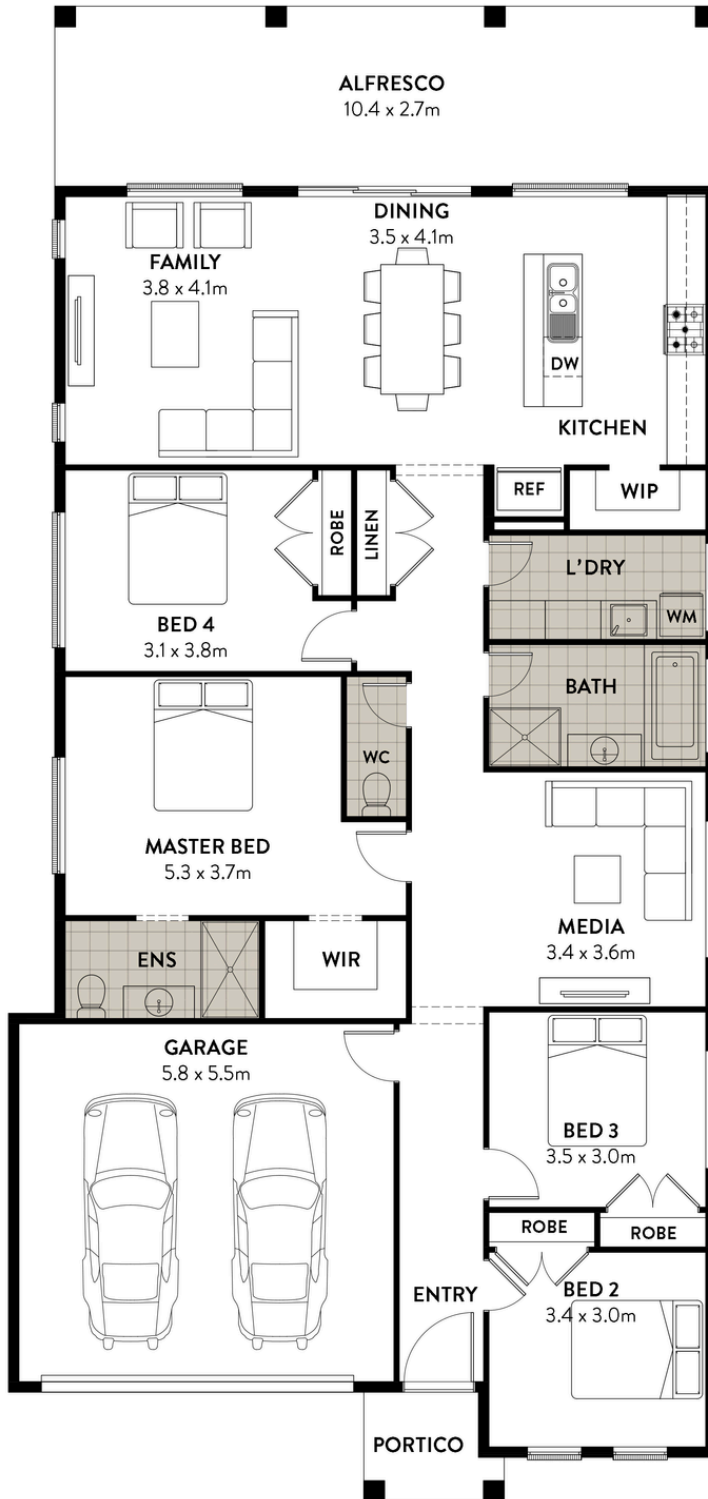
www.infinitehomes.com.au

P 02 4703 4040 M 0406 248 064

E sales@infinitehomes.com.au

 **INFINITE
HOMES**
BUILT TO LAST

MARBELLA



HOME DIMENSIONS	
Home Width	11.1m
Home Length	23.1m
Living	168.24m ²
Garage	35.06m ²
Alfresco	28.03m ²
Portico	3m ²
TOTAL AREA	234.33m²

20 Cato Circuit, Leppington NSW 2179
www.infinitehomes.com.au
 P 02 4703 4040 M 0406 248 064
 E sales@infinitehomes.com.au