



4



2.5



2



12.5m



33.6sq

PARIS

A spacious family home design featuring four bedrooms, two bathrooms, and a double garage.

On the ground floor, you'll find a versatile study, perfect for working from home or as a quiet retreat. Additionally, there's a convenient powder room for guests, along with a modern kitchen, spacious lounge/media room, and a dining area that seamlessly flows onto the alfresco space.

Upstairs, you'll find the superior master suite, complete with a walk-in robe and ensuite with his and hers vanity. Three additional bedrooms offer plenty of space for family or guests, while a main bathroom ensures practicality. Plus, there's a retreat area, providing a cosy spot for relaxation or entertainment.

STANDARD INCLUSIONS

- ✓ Westinghouse WFE915SD Freestanding Cooker
- ✓ Westinghouse WRI700SB 71cm Rangehood
- ✓ Westinghouse WSF6604XA Dishwasher
- ✓ 20mm Solid Surface Benchtop to kitchen and bathrooms
- ✓ Downlights as per detailed drawings
- ✓ Daikin ducted A/C (kW determined based on design)
- ✓ 2590mm high ceilings (2440 to first floor of double storey designs)
- ✓ Tiles to main living areas and carpet to bedrooms
- ✓ Driveway
- ✓ Integrated concrete slab and tiles to portico and alfresco

20 Cato Circuit, Leppington NSW 2179

www.infinitehomes.com.au

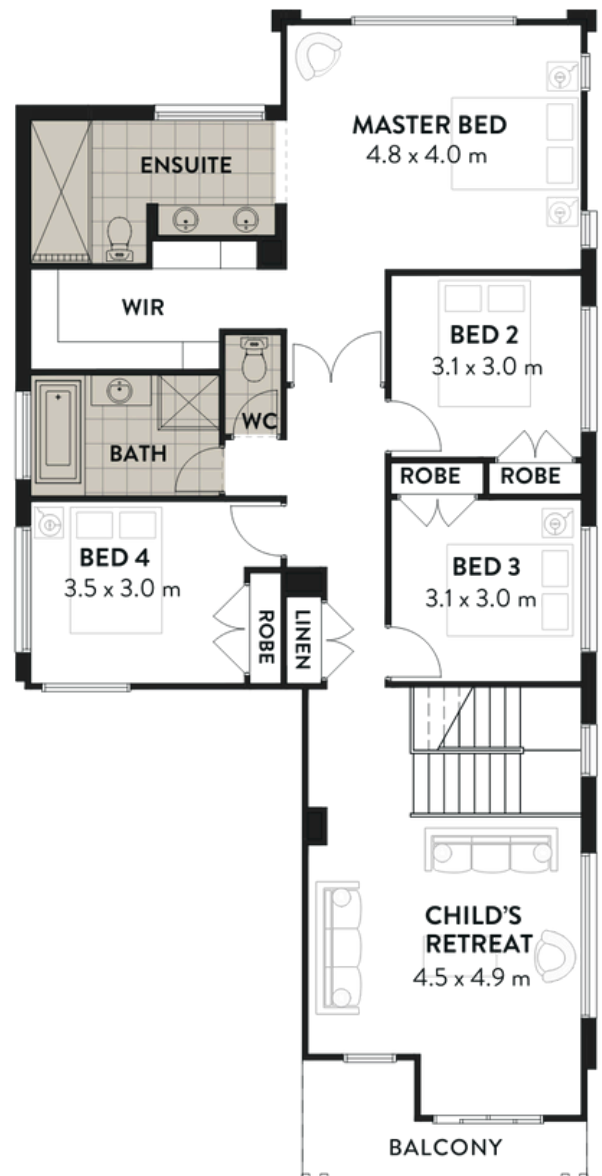
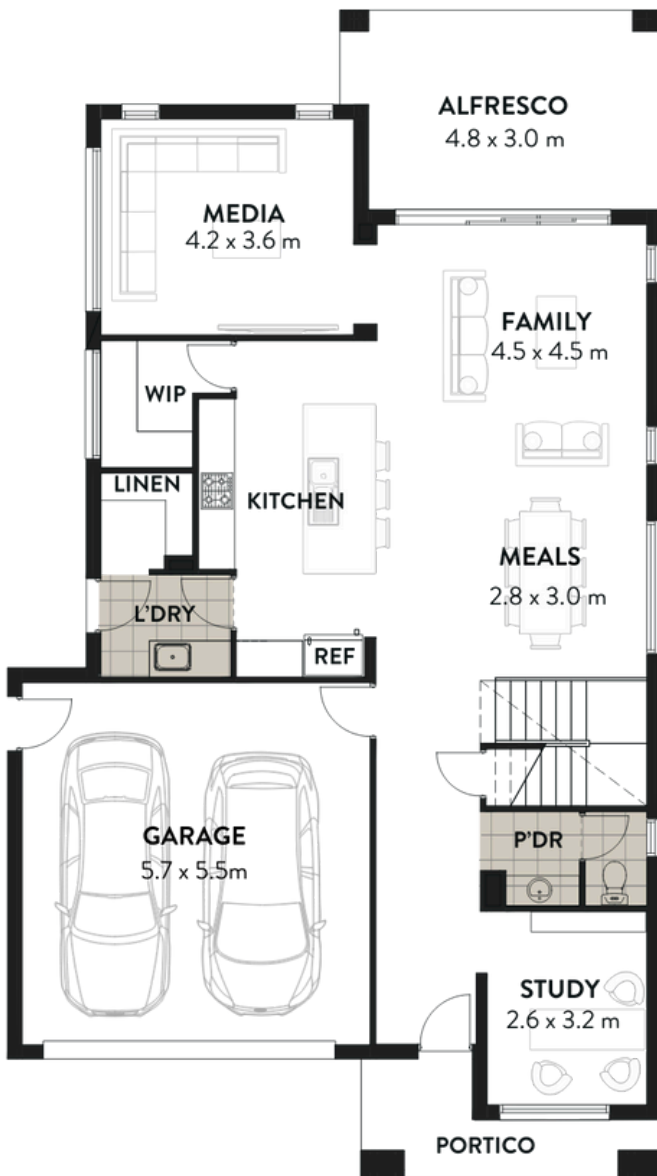
P 02 4703 4040 M 0406 248 064

E sales@infinitehomes.com.au

 **INFINITE
HOMES**
BUILT TO LAST

PARIS

HOME DIMENSIONS	
Home Width	10.8m
Home Length	19.3m
Ground Floor	115.2m ²
First Floor	129.7m ²
Garage	37.7m ²
Alfresco	16.7m ²
Portico	6.7m ²
TOTAL AREA	312.4m²



20 Cato Circuit, Leppington NSW 2179

www.infinitehomes.com.au

P 02 4703 4040 M 0406 248 064

E sales@infinitehomes.com.au

**INFINITE
HOMES**

BUILT TO LAST